

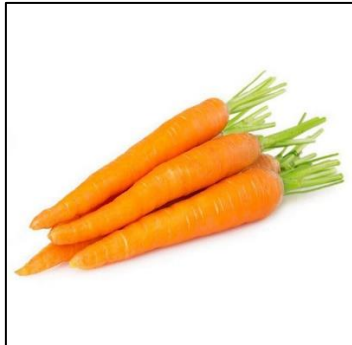
B o C ?

B

C



_ ANANE



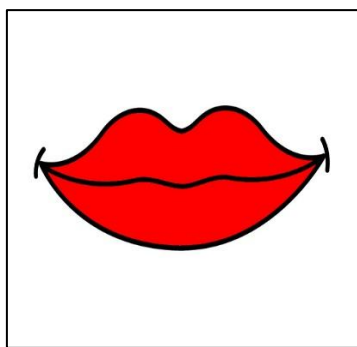
_ AROTE



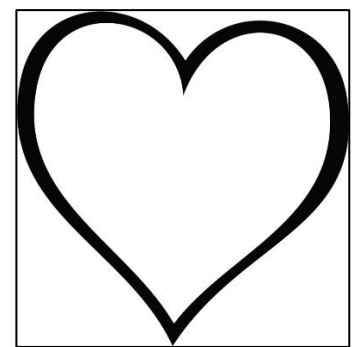
_ ASA



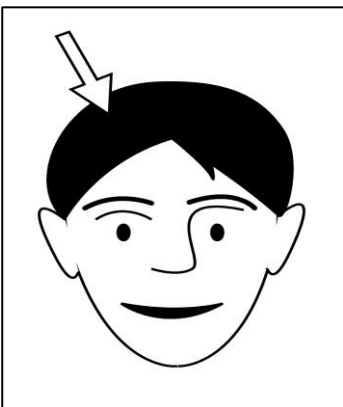
_ ORSA



_ OCCA



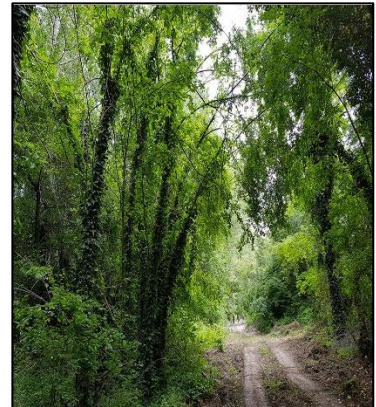
_ UORE



_ APELLI



_ ANE



_ OSCO

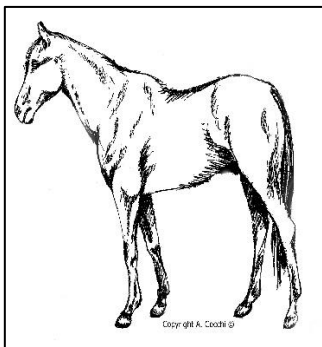
B o C ?

B

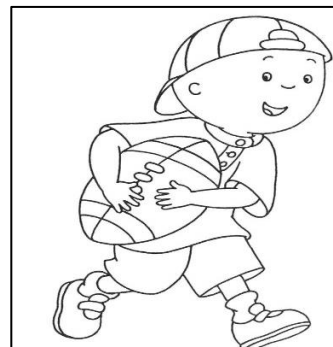
C



__ IANCO



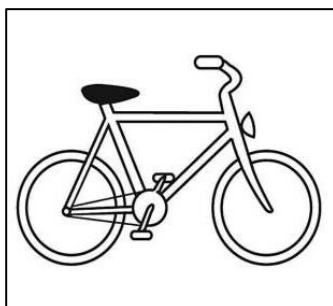
__ AVALLO



__ AMBINO



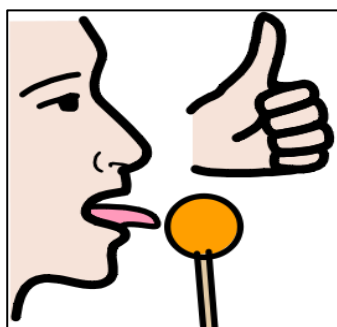
__ OLORI



__ ICI



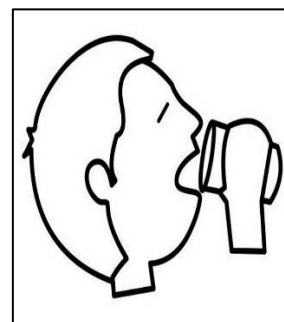
__ ORRERE



__ UONO



__ ALLARE



__ ERE